



Ship Performance Monitor

Monitoring and collecting vessel and fleet data is a key element in identifying inefficiencies and reducing the environmental footprint.



Høglund Ship Performance Monitor (SPM) is a highly adaptable monitoring software, designed to help manage and improve ship efficiency.

Høglund SPM collects fuel and power consumption data from all major systems on board, along with vessel data like average speed, distance sailed, wind speed and direction, draft, and trim. This information is organized into two types of reports: Daily Reports, generated at noon or midnight, and Mode Reports, triggered by changes in the vessel's operation mode (e.g., switching from "Sea Passage" to "In Port").

To keep installation costs low, Høglund uses existing sensors on board, achieving up to 98% accuracy in fuel consumption calculations.

All data from all on board systems is gathered and stored in Høglund Connect Cloud Portal.

Høglund SPM gives you complete control over your data. As the owner, you can decide how to use and manage it. The data can be accessed directly through our API or transferred to other cloud servers using third-party APIs.

Your data's security is ensured by Høglund's marine-approved firewall solution, installed on all Høglund systems.

Høglund SPM is versatile and can be installed as part of the Høglund IAS or used independently as a stand-alone solution.

System benefits

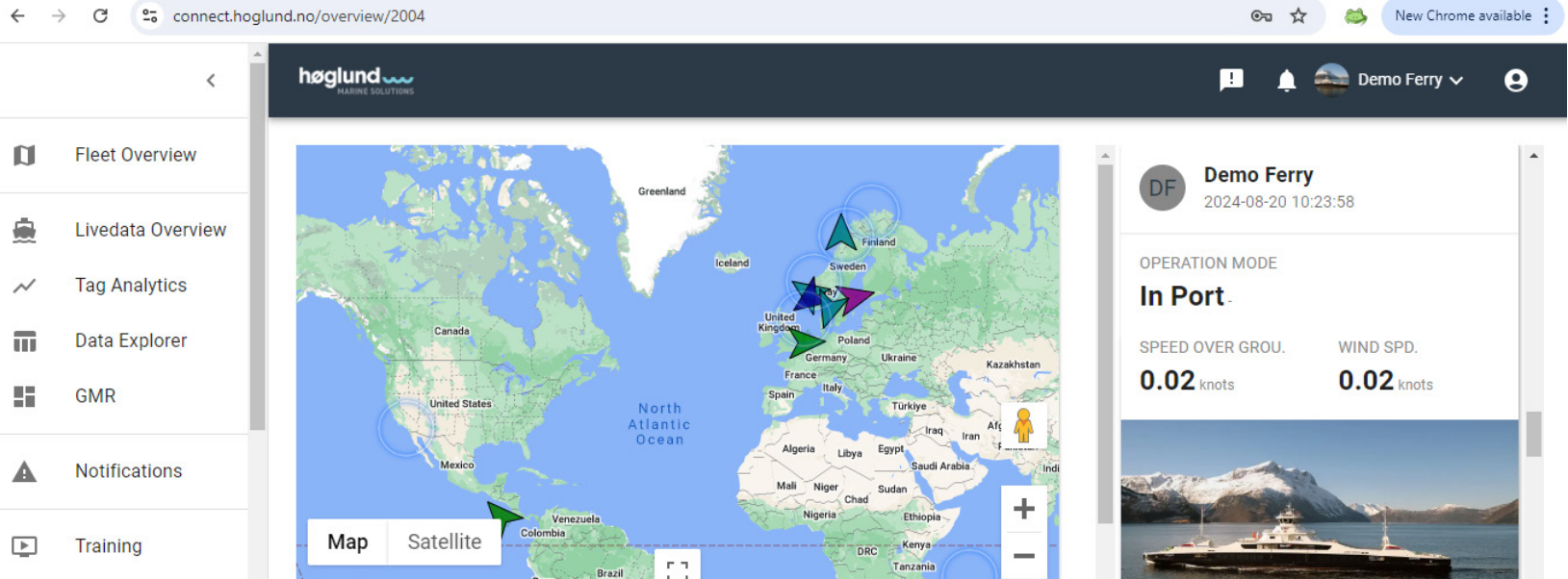
- Adaptable and secure
- Designed to fit all types of vessels
- Clear overview of the vessel fuel consumption, emissions, and other relevant data
- LiveData feature to monitor and analyse your fleet
- Reports through MRV/DCS auto upload





Høglund Connect

Allows you to connect to Høglund systems in your entire fleet through a single, secure online platform.



Høglund Connect gives you a unique insight into a vast amount of ship data along with all the tools you need to analyse, understand and improve your ship operation.

Høglund Connect Cloud Portal is your gateway to a range of features and services designed to boost your operational efficiency.

The online platform gives you instant access, on board and on shore, to any of the following:

- Performance data (fuel, power and emission)
- Live Data
- Cloud-to-Cloud Transfer
- DNV Auto Upload

You can easily customize your digital content, reports, and storage duration to meet your specific needs, ensuring you get the most value from your data.

Performance data, traditionally only available on board the vessel through Høglund SPM, is now accessible in the Cloud via the Connect Portal. This means you can view it from anywhere, at any time, presented in a user-friendly and attractive format.

With Live Data, you can monitor all data and mimics in your IAS in real-time, second by second, from shore—just as if you were on the vessel. This includes access to Høglund Playback for troubleshooting incidents.

Høglund MRV DCS Auto Upload is seamlessly integrated into the portal, and allows you to automatically generate all mandatory environmental documentation.

System benefits

- Connects users, systems and vessels in your fleet
- See your ship performance data on shore!
- Single point of access to Live-Data from the shore, including Playback and trend analysis
- All IAS signals are stored in the Cloud every second
- MRV/DCS Auto Upload

