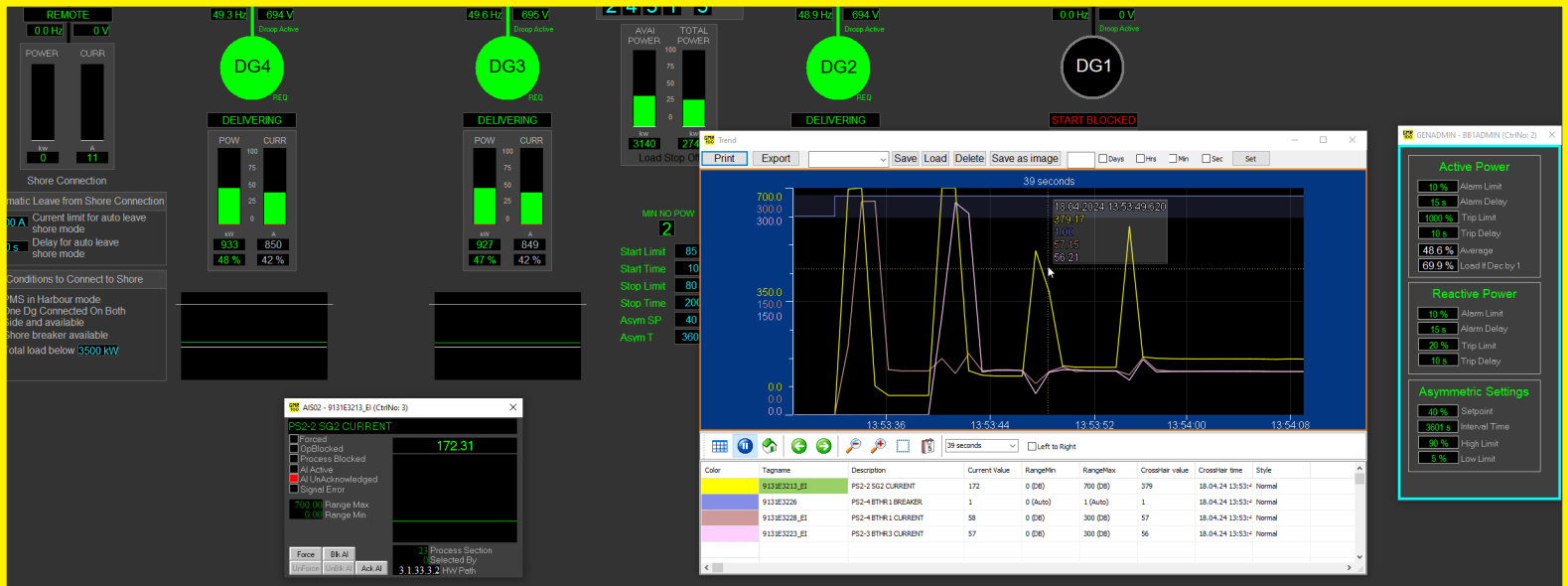




Høglund Playback

Go back in time and find the cause of the incident in only minutes!



Høglund Playback for troubleshooting incidents is one of the most important functions we have ever developed. Thanks to Playback, we have solved hundreds of incidents on vessels since 1995!

Høglund Playback is an integrated logging tool for troubleshooting, offering real-time graphical replays of past incidents. It records every signal in your automation system every second, storing them in a replayable file.

You can easily rewind to any incident, viewing it within the familiar Høglund IAS interface, distinguished only by a yellow frame indicating Playback mode.

All alarms and events are stored as unique records in a local database on each operator station, allowing manual scrolling to review specific incidents.

When you need to compare signals in detail, simply rightclick on any object and click "Trend" to open a new trend window. Additional signals can be added by dragging them into the same window. Use navigation buttons and range selection tools to adjust as needed.

In most cases, you'll be able to identify the cause of a problem on your own. However, for more complex incidents, you may need assistance from a colleague, system vendor, or a Høglund service engineer. You can generate a Playback export to create a compressed, playable .exe file that contains all the necessary data to run the Playback on any computer.

System benefits

- See all alarms and events as if they were live data
- Storing all data once every second
- Minimum 6 months Playback history
- Export function for analysis





Høglund Prilog

Høglund Alarm and Event logger- replacing the alarm printer

AE3 TCVLV LT WATER	Position closed			2024-03-25 15:00:56
ME1-2 TCVLV HTW MIX	Position opened			2024-03-25 15:01:10
HVAC RE-HEAT HIGH	Alarm	Not Normal	2-Idle	2024-03-25 15:06:49
OS22 STATUS BRIDGE NSD	OS Alarm	Os Fail	3-InactiveUnacked	2024-03-25 15:06:53
OS22 STATUS BRIDGE NSD	OS Alarm	Os Fail	2-Idle	2024-03-25 15:06:55
ME1 LO TEMP CTRL VLV	OS12 changed SP 18.4385 => 18.4835			2024-03-25 15:07:13
ME1 LO TEMP CTRL VLV	ManMode			2024-03-25 15:07:24
ME1 LO TEMP CTRL VLV	OS12 changed SP 18.6559 => 0.0			2024-03-25 15:07:29
FEED WATER TRNSF PP2 RUN	On			2024-03-25 15:08:18
FEED WATER TRNSF PP2	Started			2024-03-25 15:08:18
ME1 LO TEMP CTRL VLV	DeviationAlarm	Setpoint = 0.0. Position2-Idle		2024-03-25 15:10:12
ME1 LO TEMP CTRL VLV	OS12 changed SP 0.0 => 100.0			2024-03-25 15:10:12
ME3-4 SW COOLING PP	ManMode			2024-03-25 15:10:22
ME3-4 SW COOLING PP	NotInAuto		5-ActiveUnacked	2024-03-25 15:10:23
ME1-2 SW COOLING PP	ManMode			2024-03-25 15:10:25
ME1-2 SW COOLING PP	NotInAuto		5-ActiveUnacked	2024-03-25 15:10:26
Node 1 ER Horn Control	Reset Horn			2024-03-25 15:10:28
Node 5 ER Horn Control	Reset Horn			2024-03-25 15:10:28
Node 3 ER Horn Control	Reset Horn			2024-03-25 15:10:28
Node 2 ER Horn Control	Reset Horn			2024-03-25 15:10:29
Node 4 ER Horn Control	Reset Horn			2024-03-25 15:10:29
ME3-4 SW COOLING PP RUN	Off			2024-03-25 15:10:32
ME1-2 SW COOLING PP RUN	Off			2024-03-25 15:10:35
ME3-4 SW COOLING PP	Stopped			2024-03-25 15:10:36
ME1-2 SW COOLING PP	Stopped			2024-03-25 15:10:39
ME 2 PRELUB OIL PUMP	ManMode			2024-03-25 15:10:49
ME 2 PRELUB OIL PUMP	NotInAuto		5-ActiveUnacked	2024-03-25 15:10:50

Høglund Prilog has replaced alarm printers across various industries. It safely stores and provides remote access to event logs, eliminating the need for line printers.

Prilog reads and stores data from multiple input channels and connects to hardware outputs of other systems, such as printer ports in automation and cargo control systems. It offers easy access to historical alarms and event sequences.

Running on any PC with a communication port or network connection, Prilog can replace any printer type, interface with COM ports, or use TCP/IP for network printing. If needed, a hardware converter can adapt parallel signals to serial or network connections for remote sources.

Filtered data from input channels is stored in the data file.

When the file reaches capacity, the oldest data is automatically overwritten, preventing hard drive overload.

Prilog cleans incoming data by filtering out unwanted elements, such as control characters or unclear alarm descriptions. It can also add timestamps or comments if required.

Connecting Prilog to an existing system enables quick alarm searches and exports.

With a secure firewall, Prilog can connect to the ship's network, sending alarms and events to a cloud server for global access and analysis.

Key features and benefits

- No more lost alarms/events
- No more paper jams
- No more printer noise
- No more "out of paper" alarms
- Safe storing of alarms and events
- Automatic back up and reporting
- Remote connection and inspection
- Alarm analysing tool

